



CHINA  
OUTREACH  
MINISTRIES

Spring/Summer 2018

# IMPACT

*Together, Giving Christ to China's Future Leaders*

## Shining the Light

*New Believers Making an Impact*

Page 4

## You Can't Out-Give the Lord

*Reflections from Ruth Hummer*

Page 8

## Investments for Eternity

*COM Annual Report*

Page 6



# IMPACT

*Together, Giving Christ to China's Future Leaders*

## CONTENTS

- 1** INVESTING FOR THE LONG TERM  
*Daniel Su Reflects on Stock Market Jitters*
- 2** SNAPSHOTS FROM COM STAFF  
*Collaboration on Campus*
- 4** NEW FOLLOWERS SHINE THE LIGHT
- 6** **Annual Report**  
*2017 by the Numbers*
- 8** A BEAUTIFUL LEGACY  
*Reflections from Mrs. Ruth Hummer*
- 10** NEW STAFF / GIFT BEARERS
- 11** NEWS YOU CAN USE  
*The WeChat Phenomenon*
- 12** GOD AT WORK THROUGH HIS PEOPLE  
*Meet the COM Development Director*

*We encourage you to keep this issue of IMPACT in your favorite prayer place, that the content may guide you to pray steadfastly for our work together in giving Christ to China's future leaders.*

**中友華愛** CHINA  
OUTREACH  
MINISTRIES

555 Gettysburg Pike, Suite A-200  
Mechanicsburg, PA 17055  
com@chinaoutreach.org  
717-591-3500

Follow us on Facebook:  
[www.facebook.com/ChinaOutreach](http://www.facebook.com/ChinaOutreach)



A higher standard  
a higher purpose

COM is a member of the  
Evangelical Council for  
Financial Accountability.

IMPACT is published three times a year by China Outreach Ministries.  
Daniel Su, *President*  
Tara Miller, *Editor*  
Geoffrey Isley, *Designer*

### Write to the Editor

We'd like to hear from you! If you have feedback or ideas for future issues of IMPACT, please email Tara Miller: [tmiller@chinaoutreach.net](mailto:tmiller@chinaoutreach.net).



**O**N FEBRUARY 5—in just one day—the Dow plummeted more than 1,000 points, a 10% drop from its record high only 10 days prior. Suddenly, fear was taking over the market. Monday-morning quarterbacks claimed they knew such a market correction was coming. Behind the cacophony of the market, there were also stoic commentators calling for calm and preaching on the wisdom of investing for the long term.

*So, what is long term? And is our long-term planning long enough?*

The fallacy of our culture and our modern-day financial planning is the assumption that there is nothing to plan for beyond retirement. But from a biblical perspective, all our long-term planning is short-term in nature! The true long term includes eternity, for the Bible urges us to “fix our eyes not on what is seen, but on what is unseen, since what is seen is temporary, but what is unseen is eternal” (2 Cor. 4:18).

Ultimately, our worldview determines our values, priorities, and perspectives. In Luke 12:16-21, Jesus describes the person who lays up treasure for himself as someone who is “not rich toward God.” As the stock market runs its cycles as it always does, may the market jitters remind us of the need to invest for the long term, being rich toward God. When we plan and live with eternity in our horizon, that is true long-term planning.

On behalf of all the missionaries serving with COM, I want to thank you for your partnership with us. That’s your long-term perspective in action as you reach out in love and touch the lives of future leaders from China. Now *that* is a good investment! ■



# Creative Connections on Campus



That's more than  
1,000 dumplings!

COM staff continue to discover new and imaginative ideas for reaching out to Chinese students and scholars. Through these connections, they build relationships and open doors to share the love of Christ.

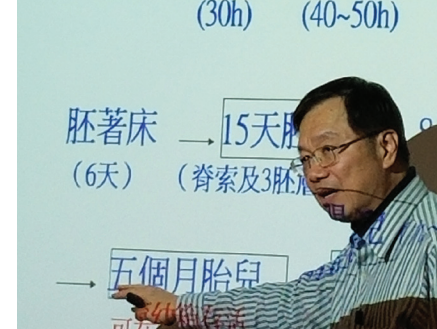
■ We had an estimated 160 people at our annual Chinese New Year celebration. That's more than 1,000 dumplings! **Our speaker was Joann Pittman, author of the book, *The Bells Are Not Silent*, the story of church bells in China—how they traveled thousands of miles from all over the world in the 19th and 20th centuries, enduring the upheaval and chaos. It's a fascinating look at the sovereignty of God over the sinfulness of mankind.**

— **Tom & Kathy Lindstrom**  
St. Paul, Minnesota



■ We invited world-renown scientist Dr. Tang Tang to share a message on “Science and Faith.” His talk was very well received and further connected the content of our Bible study in the past with what we have planned for the future.

— **Rose Chui**  
Harvard University, Boston, Massachusetts



■ I thank God that **I could purchase an NCSU gym membership, which has provided more chances to meet students.** It was here that I met “Sammy” for the first time. She has been studying in NCSU for three years, lonely, and wanted to be friends... The second time we hung out in the pool, the Lord had prepared Sammy's heart. When I told her that I am a Christian, she asked many questions.

— **JingJing R Lin**  
North Carolina State University, Raleigh, North Carolina

■ It all started when God placed in my heart a different way to reach the female Chinese scholars apart from Bible class or English classes. As I turned to L, praying inwardly that she would accept my offer, I asked, “Would you ever be interested in coming over to my house to spend some time together—maybe doing crafts or cooking?” “Yes, when?” she excitedly answered. “Would you like to invite some friends, too?” I wagered. “Ok.” So, within the month, **we had the first Cooking Group** with four people.

— **Gregg & Nancy Smyrl**  
University of Pennsylvania, Philadelphia, Pennsylvania







# New Followers Shine the Light

**O**UR STORY WITH JASON AND RANNY began at a Vacation Bible School at our church. It was the first week of August, and they had just arrived in America with their two beautiful children. For the first time we were offering an adult Bible study for Chinese parents who were bringing their children to VBS, and this is where we met.

We knew very early on that Jason and Ranny were seekers of the truth. Sure enough, it did not take them long to make decisions to believe and trust in our Lord and Savior, Jesus Christ. What a joy it was for us to witness their baptisms as they publicly proclaimed that they are followers of Christ.

As we continued to meet with them in their home for Bible study, it became apparent that they had a strong desire to introduce their family to Christ. So, we began praying with them that God would use them in

***“It is awesome to be part of a work where God uses one impact to make many more.”***

the lives of their family members. Opportunities came as family members began traveling here to State College to visit.

We remember Ranny’s excitement when she knew her parents would be coming. Even though their visit would be short, she wanted them to find Christ while they were here. We prayed with her that God would open their eyes to His love and that He would use Jason and Ranny in whatever way He would. We had an opportunity to meet her parents for the first time in their home. Even though they could not speak any English, it was a joy to spend time with them and see their excitement for being in America. And now we could put faces on our prayers.

While Ranny’s parents were here, Jason and Ranny took them to the Chinese church on Sundays, and they engaged in activities there. God answered our prayers, and they decided to believe and trust in Jesus Christ as their Savior. God is so good!

This is just one story of many of how God uses those who come to Christ to reach family members and friends for Him. It is awesome to be part of a work where God uses one impact to make many more. Thank you for being part of this work with us. ■



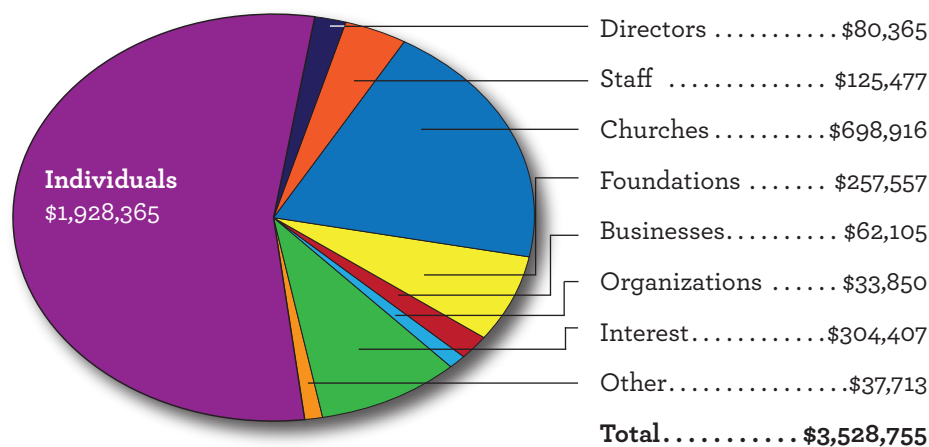


# Investments for Eternity

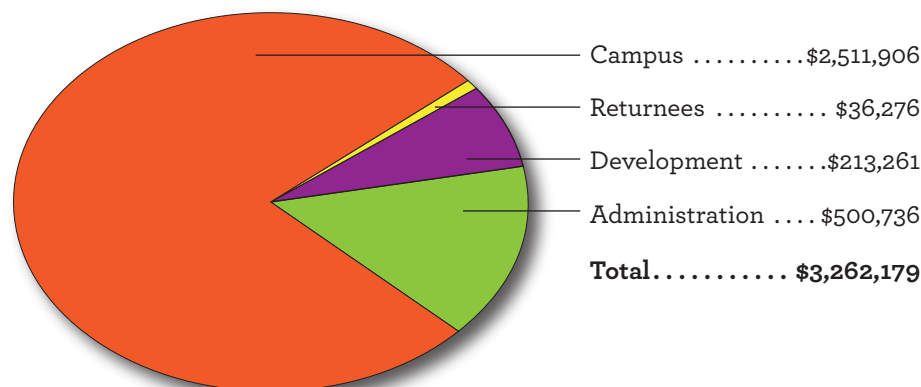
## China Outreach Ministries Annual Report 2017

What a privilege to serve so many of the nearly 400,000 Chinese students and scholars studying in America today. Through COM in 2017, more than 9,000 Chinese were exposed to the gospel and there were over 200 professions of faith in Jesus Christ in 2017. None of this would be possible without the faithful and generous contributions of our supporters and friends. Thank you for being part of the COM outreach in 2017. We look forward to watching God continue to work through His people in 2018! ■

### Sources of Support, 2017



### Distribution of Funds, 2017



### By the Numbers, 2017

# 61,068

Chinese scholars and students on campuses where COM staff are located (of the nearly 400,000 in America)

# 323

Chinese students received intentional discipleship

# 9,080

Chinese were exposed to the Gospel

# 887

Volunteers

# 229

Professions of faith

# 175

New Chinese Christians returning to China

# 112

Baptisms

# 115

Chinese Christians returning to China committed to making an impact for Christ

The official registration and financial information of China Outreach Ministries, Inc. may be obtained from the Pennsylvania Department of State by calling toll-free within Pennsylvania 1-800-732-0999, or by visiting [dos.pa.gov/charities](http://dos.pa.gov/charities). Registration does not imply endorsement. Contributions are tax-deductible for federal tax purposes.





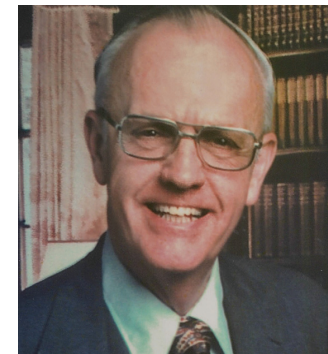
# A Beautiful Legacy

## *Reflections from Ruth Hummer, wife of former COM President, Earnest Hummer*

**E**ARNIE ALWAYS KNEW he was called to preach. He also had a strong knowledge of God's heart for missions, and he wanted to fulfill the admonition to "go into all the world." When he served as a pastor, we hosted missionary conferences at every church, and that resulted in a lot of money being sent out to bring souls to salvation. During those years, Earnie also spoke in churches for COM and helped with fundraising banquets. We prayed for the organization and supported COM financially for many years.

After we had ministered for 33 years in the pastorate, Earnie felt he wanted to serve in some capacity in missionary outreach. In 1982 he was invited to become President of COM, and we moved from Erie, Pennsylvania, to Fairfax, Virginia, the headquarters for the organization. Earnie preached in churches to acquaint them with the spiritual needs of the Chinese scholars. He helped organize missions conferences and raised money to spread the Gospel.

*Left: Ruth Hummer with her great-grandchildren: Talon, Selah, and Cali McCardle.*



*Rev. Earnest Hummer, COM President 1982-2002*

In Virginia, I served as hostess of Fairfax House. Here we hosted hundreds of Chinese who visited Washington, DC, brought by workers of Christian organizations as a witness to international students. I've often said, "You haven't lived until you have a bus full of hungry students arrive at your doorstep, and you know you're responsible to feed them." I enjoyed this part of my career, serving and interacting with these people.

The Lord laid on Earnie's heart that the Chinese needed special ministry in the universities. He wanted them to understand that "there is a God, and He loves you." As a result of seeing this need, he asked the COM Board to pray about our finding workers to minister to the Chinese scholars in our US universities. They were willing, and the Lord provided the first six to serve. This was in 1988 and was the beginning of the great staff we have today.

We served at Fairfax House for almost 10 years before moving to Shiremanstown, Pennsylvania, to be in a more central area for Earnie to recruit workers, preach in churches, and raise up supporters to finance the staff. I often accompanied him to churches and helped with the many banquets. During those years, we saw many people introduced to COM, and many were blessed as COM reached out to spread the Gospel. When Earnie became President Emeritus and Glen Osborn became President in 2002, we continued ministry in the Development Office, serving the Lord.

Earnie is now with the Lord, and I am still blessed to be part of the work of COM. I'm delighted to pray for COM and to give to reaching the Chinese leaders in our country. I have two children, three grandchildren, and three great-grandchildren. A love for missions and giving to COM has continued in the lives of these younger generations. I also continue to call friends for encouragement, write stories for my great-grandchildren, and teach a Bible study twice a month in my home. The Lord blesses us abundantly when we serve Him by giving, and we can't out-give Him!

***"Before we were married, Earnie asked me if I would be willing to serve in missions."***

*Here in COM, we're richly blessed with the legacy Earnie left behind. He lived a life of passion and generous giving, which continues to be an inspiration for us as we reach out to the Chinese with the love of Christ. I miss him, admire him, and thank God for him. — Daniel Su*



## Welcome New COM Staff



■ Jia Zhu, Kentucky

Jia Zhu joined COM as a tentmaker in December 2017. Jia, his wife, and two daughters live in Louisville, Kentucky, where Jia is currently completing his MA in Worship Leadership and Theology at The Southern Baptist Theological Seminary. Jia completed his undergraduate degree in chemical engineering. He began his ministry studies at Westminster Theological Seminary in Philadelphia, where he was originally introduced to COM through Esther Xiao. Jia will be serving the scholars at the University of Louisville.

### Gift Bearers

*Special gifts and contributions to the ministry of COM*

#### In Memory of

##### Earnie Hummer

Mrs. Earnest W. Hummer

##### Dottie Kurzeja

Mrs. Earnest W. Hummer

Rev. and Mrs. Daniel Su

Mr. and Mrs. Robert Walz

##### Donald Swann

Mrs. Earnest W. Hummer

##### John Weaver

Mr. and Mrs. Robert J. Simon

#### In Honor of

##### Grace Bible Church

Mr. Andrew Chinn

##### Richard Hogue

Mr. and Mrs. John Kuphal

##### Glen and Betty Osborn

Dr. and Mrs. Daniel Warner

##### RP Global Mission Board

Mr. Eric Bibby

#### Hummer Memorial

Mrs. Earnest W. Hummer

Mrs. Judie Kunkle

Mr. Gene Neff

## Why I Give to COM

I really appreciate COM for the opportunity to be a part of the great vision of the leadership who realize the great impact for Christ and the church.

# 远景

# NEWS

## YOU CAN USE

We know that many of our *IMPACT* readers are actively, personally engaged in outreach to Chinese students and scholars. Your volunteer service through churches, COM on campus, and other campus ministries is yet another way we're working together. In "News You Can Use" our editorial staff presents some updates and insights to help us all learn to more effectively build relationships with our own Chinese neighbors.

## Connecting with Chinese Friends The WeChat Phenomenon

Many Christians find WeChat a useful tool to reach out to Chinese friends. This multi-purpose messaging and social media app is revolutionizing communication, and you may be surprised at the ministry opportunities.

According to the 2017 WeChat User Behavior Report\*:

- There are now 889 million users.
- WeChat is most used by those in the 26-35 age group.
- Average time spent in WeChat is now 66 minutes/day.

Here's just one story of how a COM staff member has experienced the connecting power of WeChat.

Recently, I was invited to join two WeChat newcomer groups. I posted info of the Welcoming Gospel Dinner on each group and ended up with Christians in these two groups encouraging others to join us. Others asked thoughtful questions, and I answered many of them.

A visiting scholar from the WeChat group attended the Welcoming Gospel Dinner and responded with excitement when she heard our message. She told me that she had been looking for truth in the Bible for nine years. I invited her to enter God's covenant through faith in Christ by prayer. After one week, she told me that God had answered all her prayers. She submitted her life to God and asked for baptism. She told me that the Holy Spirit gives her a heart to lead a life that glorifies God.

— Yaofang Sunny Zhang

St. Joseph's University, Philadelphia

\*Source: 2017 WeChat User Behavior Report. Tencent Penguin Intelligence.  
[www.chinachannel.co](http://www.chinachannel.co)







## God is at work through the faithful support of His people.

*An interview with Jeff Krimmel, Vice President of Development*

**T**HERE'S NO ORDINARY DAY for Jeff Krimmel. His work includes everything from raising money for operations, writing grant proposals/reports, and heading up campaign work and planned giving. He also serves on the Leadership Team. With more than 35 years of experience in development, Jeff has served with COM for 12 years.

In Jeff's own words, we're sharing some insight about the work of COM and his commitment to the mission.

### *What does the COM community need to know about your role?*

The bottom line and the heart and passion of COM is to introduce Christ to Chinese students and scholars studying in America. But I think our supporters also need to know that COM's foremost interest, when it comes to raising resources, is the donor. Our goal is to minister to and encourage our financial supporters, putting what is best for them before the needs of COM. That is the commitment of the COM Board and the Development Office.

*Jeff, with his wife Terry, who faithfully serves as a volunteer in the work of COM Development.*

### *How do you see God at work, during these exciting days, in providing resources for ministry?*

God is at work through the faithful support of His people. Some of our supporters have partnered with COM for over four decades! Their consistent and faithful support has stabilized the work of COM for many years as we plan budgets and look ahead to the vision God gives us for the future. They live what they believe, and that often includes giving generously. They not only give financially but also pray for COM regularly.

### *As there are now approximately 400,000 Chinese students and scholars on US campuses, what challenges does COM face in meeting the tremendous needs and opportunities?*

COM's biggest challenge is finding more workers for the harvest. With a growing number of Chinese in America each year, COM is not coming close to reaching all the Chinese students on US campuses. We do not know how long this window of opportunity will remain open.

### *What are COM's fundraising goals for the next year?*

We will continue to raise operational dollars so we can provide organizational support for our campus missionaries (staff) and to raise more dollars to help new staff get started with training, technology, and equipment. The more we can do to help smooth the way for our new staff, who are leaving good jobs to enter COM ministry, the better! We are currently developing goals for supporting many new staff over the next three years and beyond.

### *How can IMPACT readers pray for you?*

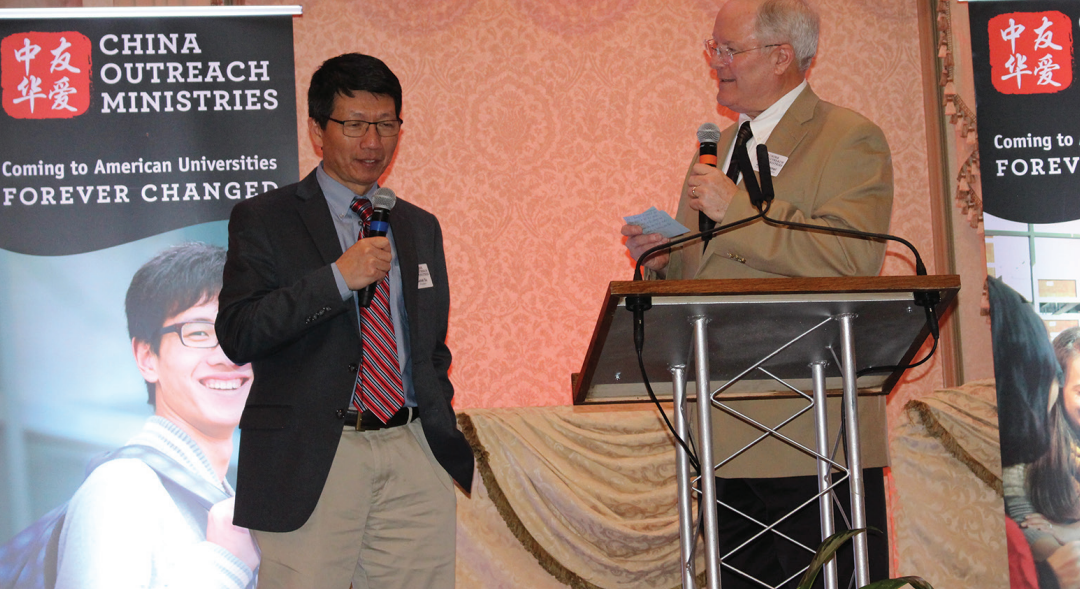
I'd appreciate prayer for creative ways to reach all generations with the opportunity to support COM's outreach to Chinese students. Each generation responds differently to various appeals for support and communications in general, especially with changes in technology. Thank you!

### *If our readers would like to talk more about opportunities to support the work of COM, how can they contact you?*

I would enjoy connecting with anyone interested in partnering with us to reach more Chinese students! That may be through giving, volunteering, or becoming a staff member. You can reach me at 717-591-3500, ext. 25, or email me at [jkrimmel@chinaoutreach.net](mailto:jkrimmel@chinaoutreach.net). ■



We are thankful for the 648 friends who attended COM Spring banquets and \$110,287 in contributions.



NONPROFIT ORG.  
U.S. POSTAGE PAID  
MECHANICSBURG, PA  
PERMIT NO. 227

**CHINA  
OUTREACH  
MINISTRIES**



555 Gettysburg Pike Suite A-200  
Mechanicsburg, PA 17055

ADDRESS SERVICE REQUESTED